



Vicksburg Vision Campaign



Vicksburg Trail System



N. Main Retail/Lofts



Clark Park



Professional Office District



Parking Enhancements



Streetscapes



Liberty Lane Extension

Village With A Vision



Building a Legacy for Future Generations



Vicksburg ... Great Place to Work, Live and Play!

Nearly 135 years ago, Vicksburg began with a dream starting by John Vickers with a single grist mill. Today, the Village has grown to be a dynamic community that continually drives forward, embraces its citizens, and offers a welcoming, friendly experience for visitors. It's time to continue moving Vicksburg toward the future while embracing our heritage and family oriented values.

Today, we begin an ambitious effort to redevelop the downtown and continue building the Vicksburg legacy for future generations. This Capital Campaign will fund the construction of a new nature trail system; enhancements to area parks; expand and improve parking for easy access to the downtown district; and update its streetscapes with new sidewalks, trees, flower containers, and seating. In addition to substantial grants, we need your help to create a vital environment for residents and business. Our goal for this Campaign is \$2.7 million dollars to fund projects totaling \$7.3 million in the next few years.

To reach this goal, we are asking for your help to make a gift to the Campaign. Although every bit helps, we are looking for three-year pledges and major gifts from area residents, businesses and foundations. This is a once-in-a-generation opportunity to dramatically enhance the Village and make your mark in Vicksburg's history. As you look through this brochure, you will see we have taken your dreams for the future and put them in a plan to make them a reality in the future.

Vicksburg Trail & Park System

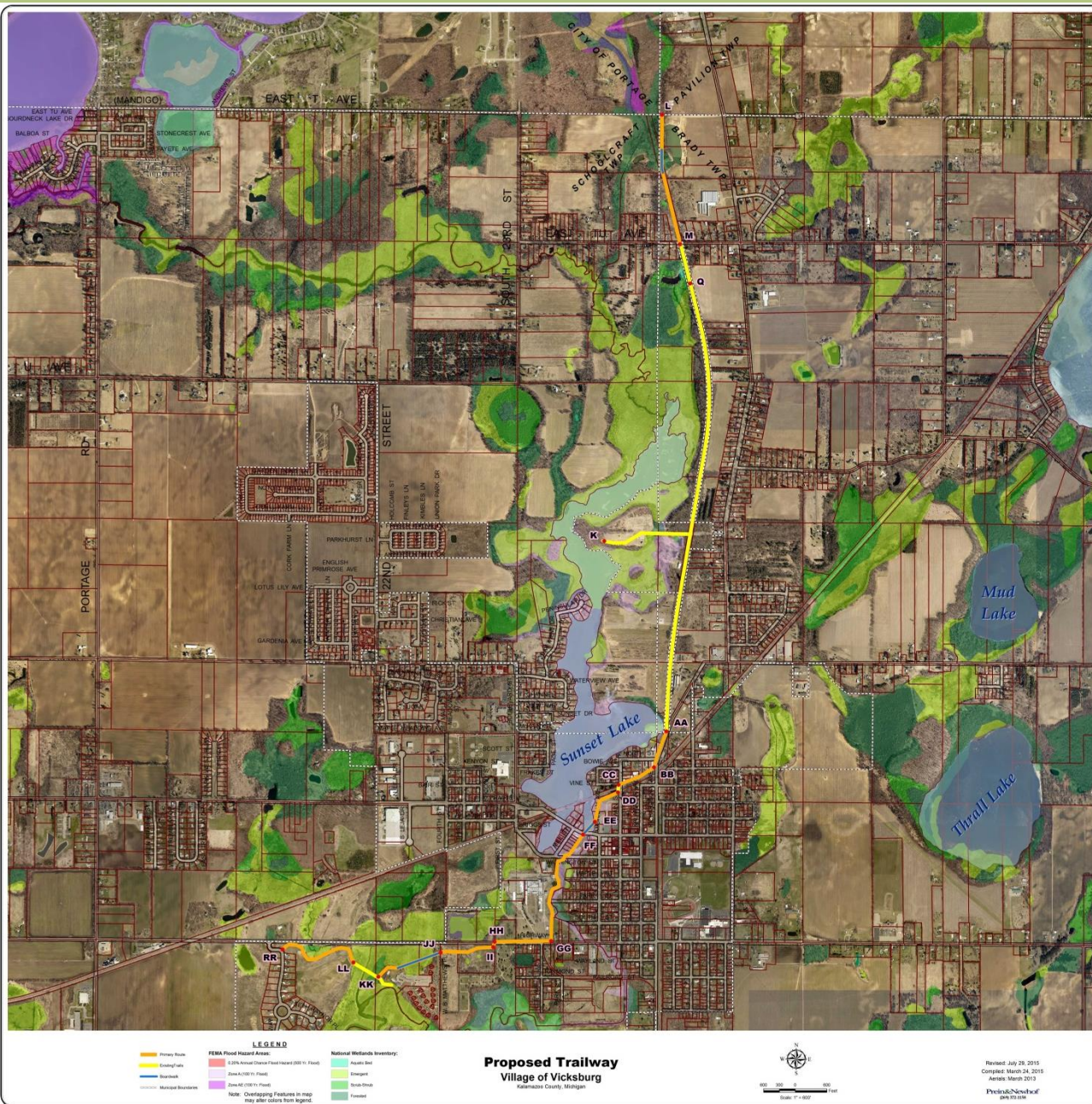
- **Nature Trail**
2.6 mile non-motorized pedestrian/bicycle friendly trail starting north of "TU" Ave. at the City of Portage boundary, running south along the Vicksburg Recreation Trail, through the downtown district and Clark Park, following Portage Creek along the former paper mill plant then west to Angels Crossing Golf Course.
- **Clark Park Promenade**
A 15-foot wide brick stenciled path that will extend between Prairie St. and Washington St., providing areas for vendor carts, an entertainment stage, picnic area and pedestrian trail.
- **Oswalt Park Enhancements**
Area for music and other performing events, and architectural features with seating.



Vicksburg Nature Trail

GOAL: To provide a recreational experience for residents and visitors that will positively impact economic development by connecting with other communities and Vicksburg tourist destinations.

Providing a natural recreational experience through a variety of environments including scenic wetlands, woodland, prairie, marsh, lake and streams. This pedestrian and bicycle friendly trail will feature paved and raised boardwalk paths connecting many points of interest in the Village of Vicksburg. Interpretive educational graphics depicting our native species will be located along the route to gain a deeper understanding and appreciation for our local wildlife habitats. Future trail connections include the City of Portage Bicentennial Park Trail system to the north, and the Three Rivers Trail to the south.





Parking Redesign

GOAL: To provide adequate and convenient parking and pedestrian walkways which are critical to business success and will accommodate future growth to compliment our beautiful shopping district.

1 Parking Lot 1 (behind S. Main St.)

- 67 Paved, marked areas
- Security Lighting
- Islands with trees for shading
- Pedestrian Walkways
- Beautifully Landscaped

2 Parking Lot 2 (behind Post Office)

- Expanded parking for growth
- Security Lighting
- Beautifully Landscaped

3 Liberty Lane Extension

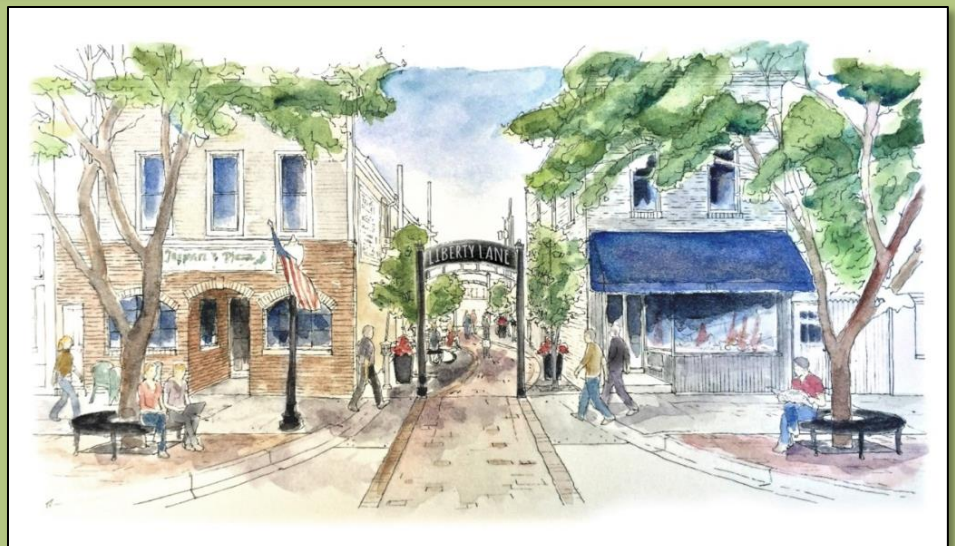
- Brick Pedestrian Walkway
- Security Lighting
- Landscaped Courtyard Seating



*Parking Lot 1
view from Washington St.*

New signage will also be developed for directing visitors to parking areas to provide convenient access to shopping district.

*Liberty Lane Extension
view from S. Main St.
To Kalamazoo Ave.*



Streetscape Plan

GOAL: To provide a strong foundation for stimulating significant commercialization activities while providing an accessible, comfortable atmosphere to enjoy the heart of our community.

Planned streetscape elements include stamped concrete and scored concrete sidewalks, street trees with grates, landscaped planters, enhanced tree lines, bike racks, additional lighting, benches, stamped concrete crosswalks, and enhancements to accommodate sidewalk café seating. Additionally, crosswalks will feature traffic safety enhancements to security and accessibility. These developments are planned for:

- Main St
- Prairie St.
- Washington St.
- Richardson St.
- Michigan Ave.
- Kalamazoo St.





Be Part of the Future

PAYMENT SCHEDULE BASED ON A 3-YEAR PAY PERIOD AND 50% INITIAL GIFT

Pledge Amount	Initial Gift (50%)	Quarterly (12 Payments)	Annually (2 Payments)
\$ 100,000	\$ 50,000	\$ 4,166	\$ 25,000
\$ 80,000	\$ 40,000	\$ 3,333	\$ 20,000
\$ 60,000	\$ 30,000	\$ 2,500	\$ 15,000
\$ 50,000	\$ 25,000	\$ 2,083	\$ 12,500
\$ 40,000	\$ 20,000	\$ 1,667	\$ 10,000
\$ 20,000	\$ 10,000	\$ 833	\$ 5,000
\$ 10,000	\$ 5,000	\$ 417	\$ 2,500
\$ 8,000	\$ 4,000	\$ 333	\$ 2,000
\$ 6,000	\$ 3,000	\$ 250	\$ 1,500
\$ 5,000	\$ 2,500	\$ 208	\$ 1,250
\$ 4,000	\$ 2,000	\$ 167	\$ 1,000
\$ 3,000	\$ 1,500	\$ 125	\$ 750
\$ 2,000	\$ 1,000	\$ 83	\$ 500

Acknowledgement Policy: All donors will be acknowledged for their support. Donors of specific gifts will be honored by a permanent individual plaque on the structure or in the area.

How to Donate

Become part of Vicksburg's history as we build for the next generation. Enclosed in this brochure is a pledge card.

One-time gifts can be made, or there is a suggested giving plan that encourages financial commitments over a three-year (36 month) period. The "Pledge Card" provides space for you to designate your total pledge, initial offering and payment interval that you request. Appropriate payment schedules will be mailed upon receipt of your pledge with the payment period beginning on the date we receive your pledge card. An initial offering of 50% of your total gift is requested at the time of your gift plan selection.

Gift Acceptance

Although pledge commitments may be paid over a three year period, there is an urgent need to realize much of the funding this year. To provide matching funds for grants, it will be necessary to have a significant portion of funds in hand before beginning construction. We hope that you are able to structure your gift to help us meet the upcoming grant requirements this fall. Stocks, securities and other appreciated assets are accepted.

Matching Gifts

If you work for a company that matches gifts, you can double your gift by following your employer's matching contribution procedures. Please contact your human resources office for eligibility information.

Online Giving

Gifts may be made online at www.VicksburgMI.org using your bank information or a major credit card. Since the Village is charged a processing fee on all credit card donations, we encourage you to use the electronic funds transfer option available online.

All donations are for a public purpose and are 100% tax deductible. Please consult your tax preparer for more information. All checks should be made out to the Village of Vicksburg/Vision Campaign.

Commemorative Gifts

Although gifts are given to reflect our commitment to the community, we recognize this as an opportunity to remember or honor our loved ones. Please contact Bill Adams if you'd like to explore commemorative gift opportunities or explore ideas for others:

- Trail Sections and Trailhead
- Gazebos & Pavilions
- Clark Park Promenade
- Liberty Lane Extension
- Benches, Bike Racks, and Exercise Stations
- Public Art
- Parking Areas

Campaign Goal

VILLAGE COUNCIL

Bill Adams, President
Colin Bailey
Jeff Becker
Julie Merrill
James Earl
Chris Newman
Ron Smith

Ken Schippers, Village Manager
Jenny McKillop, Village Treasurer
Theresa Paddock, Village Clerk
Stella Shearer, Village Project Specialist

DDA BOARD

Steve McCowen, Chairperson
Tanya DeLong, Treasurer
Stella Shearer, Acting Secretary
Ken Schippers, Ex-Officio, Village Manager
Bill Adams
John DeBault
Laura Howard
Mary Marshall
Julie Merrill
Amy Miller
Mandy Miller
Mike Oswalt
Didik Soekarmoen

Kathleen Hoyle, Director

CAMPAIGN GOAL: \$2.7 Million

PROJECT COSTS (after matching grants)

Vicksburg Nature Trail:	\$ 920,000
Clark & Oswalt Park Enhancements:	200,000
Parking Lot #1 (Behind S. Main St.):	250,000
Parking Enhancements & Signage:	150,000
Liberty Lane:	80,000
Streetscapes & Traffic Safety:	1,100,000

CAMPAIGN CABINET

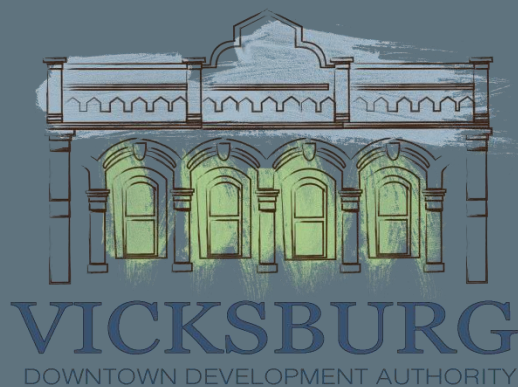
Campaign Chair: **Ted Vliek**
Kristina Powers Aubry

Family Division:	Ron Smith
Foundation Division:	Bill Adams
Special Gifts Division:	Steve McCowen
Business Division:	Gary Hallam
Vendor Division:	Steve Goss
Community Division:	Mary Ruple



VISION:

Downtown Vicksburg will be . . .
a premier destination which embraces our rich heritage by
showcasing unique boutiques in historic storefronts,
and offering dynamic dining, event and
entertainment experiences along the shores of Sunset Lake.



www.VicksburgDDA.com

269-649-1919